

TORQUE CHART 25gx (TJ Tools)

Model	Sq Drive	Serial No:	Calibrated:	Next Due:	Certificate Number	Source
25gx	1"	0	0-Jan-00	0-Jan-00	Single Speed	Air



High Torque Hire



Torque Multipliers



Compressor Hire



Gen Set Hire



Porta Power



Flange Spaders



Hydraulic Pumps

RAD 25 GX



AIR - PSI	Ft Lbs	NM
15	500	678
19	600	814
22	700	949
26	800	1085
29	900	1220
33	1000	1356
36	1100	1492
40	1200	1627
43	1300	1763
47	1400	1898
51	1500	2034
54	1600	2169
58	1700	2305
61	1800	2441
65	1900	2576
68	2000	2712
72	2100	2847
75	2200	2983
79	2300	3119
82	2400	3254
86	2500	3390

Setting Torque:

1/ Connect compressed air to inline water Filter -Regulator / Lubro (FRL) unit. Use additional water traps where possible. Maintain air above 30 cfm & 100 psi.

2/ Connect tool to hose on opposite side of FRL.

3/ Place tool on ground and select forward. Squeeze trigger, and note current air pressure reading on the gauge.

4/ Choose required torque value and use torque chart to obtain Air pressure in (PSI)

5/ Squeeze trigger again and "while tool is running" adjust the regulator to match your PSI selection.

Note: The psi showing on the gauge is only relevant while the tool in running.

6/ To torque up, place tool on nut. Check for secure reaction point. Ensure hands are clear. Squeeze trigger and run the tool until it stalls out.

Important:

- * Always Keep hands clear of moving parts and pinch points.
- * Only use tool with the FRL in line.

- * Read all manufactures instructions.

- * Ensure the FRL remains upright . If tipped over the trapped water and oil, will pass through the tool.

- * Ensure the water Traps are emptied when full.

- * Ensure the oiler has enough oil. Use Hydraulic oil ,Viscosity 46

- * Ensure the oilier drip rate is at least 1 drop per 60 seconds. see sight bubble at top.

- * Use safety glasses and gloves.

* **Note:** This is a generic torque chart. Each Model tool requires individual calibration.



240 Volt Rads



Hire Hand Torque



Back Up Spanners



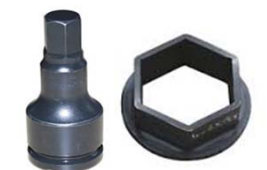
Floggers



Huck Guns



Impact Sockets



Inhex - Inserts